



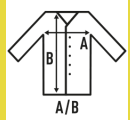
O PORTO (SCRUB)

Unisex scrub top. V-neck.
Single stitch at sleeve and bottom hems.
One chest pocket, left side.
Two pockets at bottom.
Double stitch in pocket opening. Side slit.
Half moon at back neck.

65% polyester / 35% Cotton. Weight: 170 g/m² approx.



Box 50 uds.



SIZE

EU	XS	S	M	L	XL	XXL	3XL
Width	57 cm 22.4"	60 cm 23.6"	63 cm 24.8"	66 cm 26"	69 cm 27.2"	72 cm 28.3"	75 cm 29.5"
Length	72 cm 28.3"	73 cm 28.7"	74 cm 29.1"	75 cm 29.5"	76 cm 29.9"	77 cm 30.3"	78 cm 30.7"

